



REGIONAL DISTRICT OF OKANAGAN-SIMILKAMEEN

INFORMATION RELEASE

August 1, 2018 10:00 am

Evacuation Order Issued for Cathedral Lakes Lodge Due to Placer Mountain Wildfire

Under a State of Local Emergency in RDOS Electoral Area "G", an Evacuation Order has been issued for **Cathedral Lakes Lodge**. The Placer Mountain wildfire poses a heightened risk to human safety due to potential loss of road access to the Lodge. BC Parks has also closed the entire Cathedral Provincial Park and Protected Area for hiking. All guests and hikers within Cathedral Provincial Park are asked to leave the Cathedral Provincial Park area immediately.

Anyone requiring Emergency Social Services can contact the RDOS Emergency Operations Centre at 250-490-4225.

The Ashnola Forest Service Road remains closed by the Province of BC past the 25 kilometer marker. The Evacuation Order does **not** affect additional areas along the Ashnola Forest Service Road including the Cathedral Lakes Lodge basecamp parking area, recreation sites before the 25 kilometer marker, homes near Ewart Creek Road and access to Crater Mountain. A camp fire ban has been declared for the entire Kamloops Fire Centre region including the entire Regional District of Okanagan-Similkameen. With high temperatures, all backcountry users are asked to be extra vigilant and fire smart.

Information will be updated at www.rdos.bc.ca. For information on BC Parks visit www.env.gov.bc.ca/bcparks

See map of evacuation area below

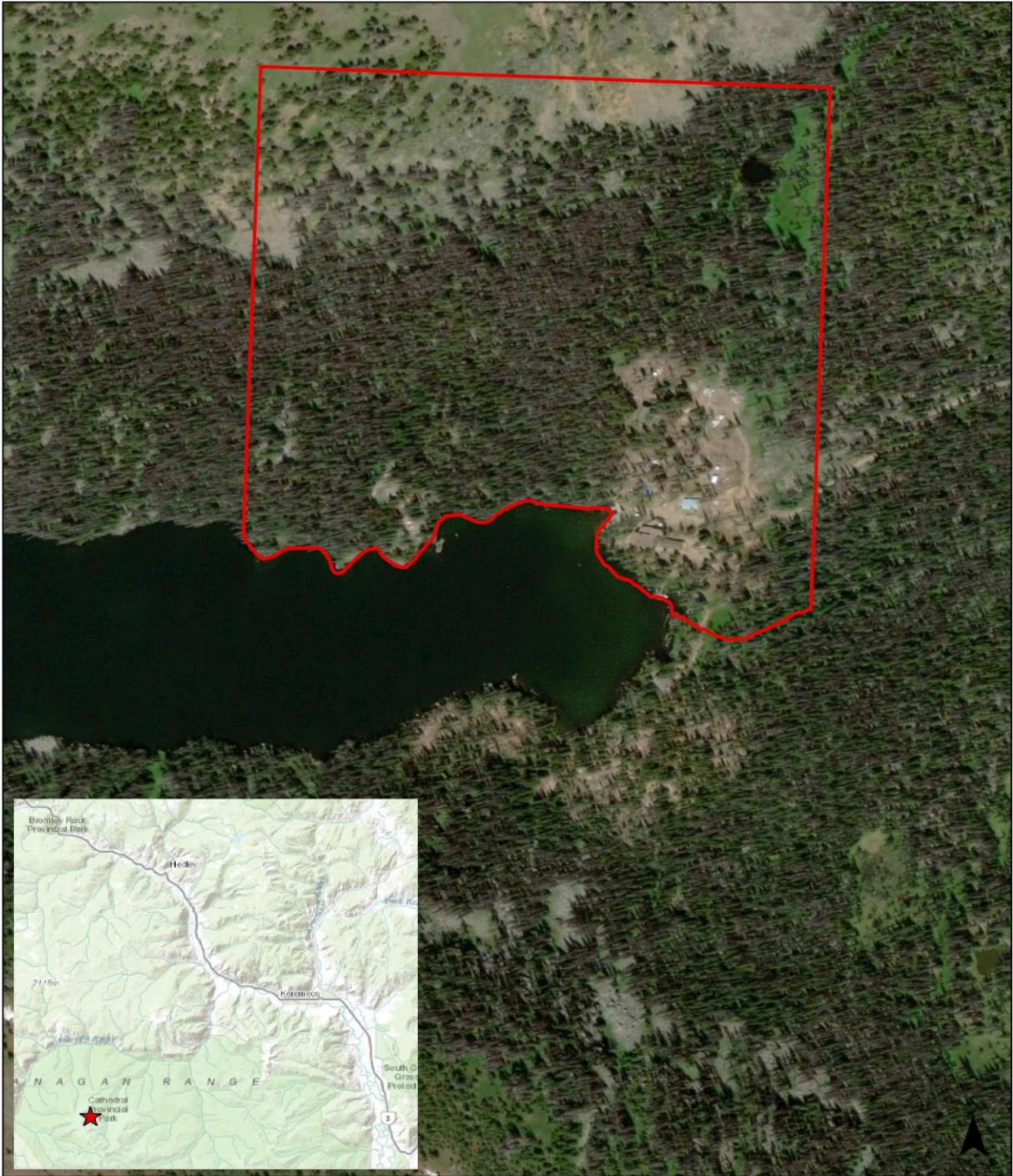
An advisory evacuation alert has also been placed on properties in the Cawston and Keremeos areas due to the separate Snowy Mountain wildfire. Updated counts this morning show in total 384 property parcels have been placed on alert within the Village of Keremeos and 481 properties in the rural Keremeos and Cawston areas. These numbers do not include areas within the Lower Similkameen Indian Band also under evacuation alert.

For more information visit the RDOS website www.rdos.bc.ca.

Issued by Director of RDOS Emergency Operations Centre
RDOS EOC 250-490-4225

####





Evacuation Order - Cathedral Lakes Lodge
 Start Time - Aug 1, 2018 @ 10:00AM
 Regional District Okanagan-Similkameen

Evacuations

- Alert
- Order
- Rescind

