



Information Release
May 15, 2018
3:00pm

Evacuation Alert

The Town of Princeton has issued an Evacuation Alert for low-lying properties within the Town boundaries along the Similkameen and Tulameen Rivers. See attached schedule for current property listing.

This is only an Alert notice.

The Evacuation Alert has been issued to give residents as much notice as possible in order to prepare yourself to evacuate your premise or property should it be found necessary.

People with mobility or health needs:

It is recommended that residents in the Alert Notice Area with limited mobility or health needs should self-evacuate.

If you are self-evacuating, check in and register at the Princeton ESS at 148 Old Hedley Road known as the Riverside Centre. The hours of operation of the ESS is from 9:00am to noon. You can also phone the ESS during the hours of operation at **250-295-0202.**

Water Use and Sump Pumps:

If you find the need to use a sump pump to dispose of seepage water, you must pump out to grade and onto the street. Do not pump into the Town's sanitary sewer system.

We would also request that all town residents reduce the use of domestic water as to not over work our sanitary sewer system.

WHAT YOU SHOULD DO WHEN A PRECAUTIONARY ALERT OR EVACUATION ALERT IS IN EFFECT

Upon notification of an EVACUATION ALERT, residents should be prepared for immediate evacuation by:

- Locating all family members or co-workers and designate a meeting place outside the evacuation area, should an evacuation be called while separated;
- Gathering essential items such as **medications, eyeglasses, valuable papers (i.e. insurance), cell phone charges and immediate care needs for dependents** and, if possible, keepsakes (photographs, etc.). Have these items readily available for quick departure;

- Preparing to move any disabled persons and/or children;
- Moving pets and livestock to a safe area;
- Arranging accommodation for family members if possible. In the event of an evacuation, Reception Centres will be opened if required.
- Monitoring news sources for information on evacuation orders and locations of Reception Centres.

Town staff activities:

You may see Town Officials, EOC Officials or Public Works staff in or around your property and dikes monitoring and assessing the situation. High priority will be given to reinforcing critical infrastructure.

Property owners:

It is a good time to secure all valuables and prepare sump pumps if you are susceptible to ground water seepage. Sump pumps should pump out to surface grade, not to the Town sewer system.

Sand and sand bag materials can be found at the back of the Princeton Fire Hall.

Information:

Public information notices will be posted to the Town of Princeton website at:
www.princeton.ca

Email comments or questions to eoc@princeton.ca
Or call 250-295-7511

Download the new Princeton App

Here are the links:

Google Play Store:

<https://play.google.com/store/apps/details?id=com.civcapps.princeton>

App Store:

<https://itunes.apple.com/us/app/town-of-princeton-bc/id1370721359?mt=8>

Links:

Website: www.rdos.ca

Facebook: <https://www.facebook.com/RegionalDistrictOfOkanaganSimilkameen/>

Twitter: <https://twitter.com/EmergMgtRDOS>

Government of BC sandbag Link <https://www.emergencyinfobc.gov.bc.ca/how-to-build-a-sandbag-dike/>

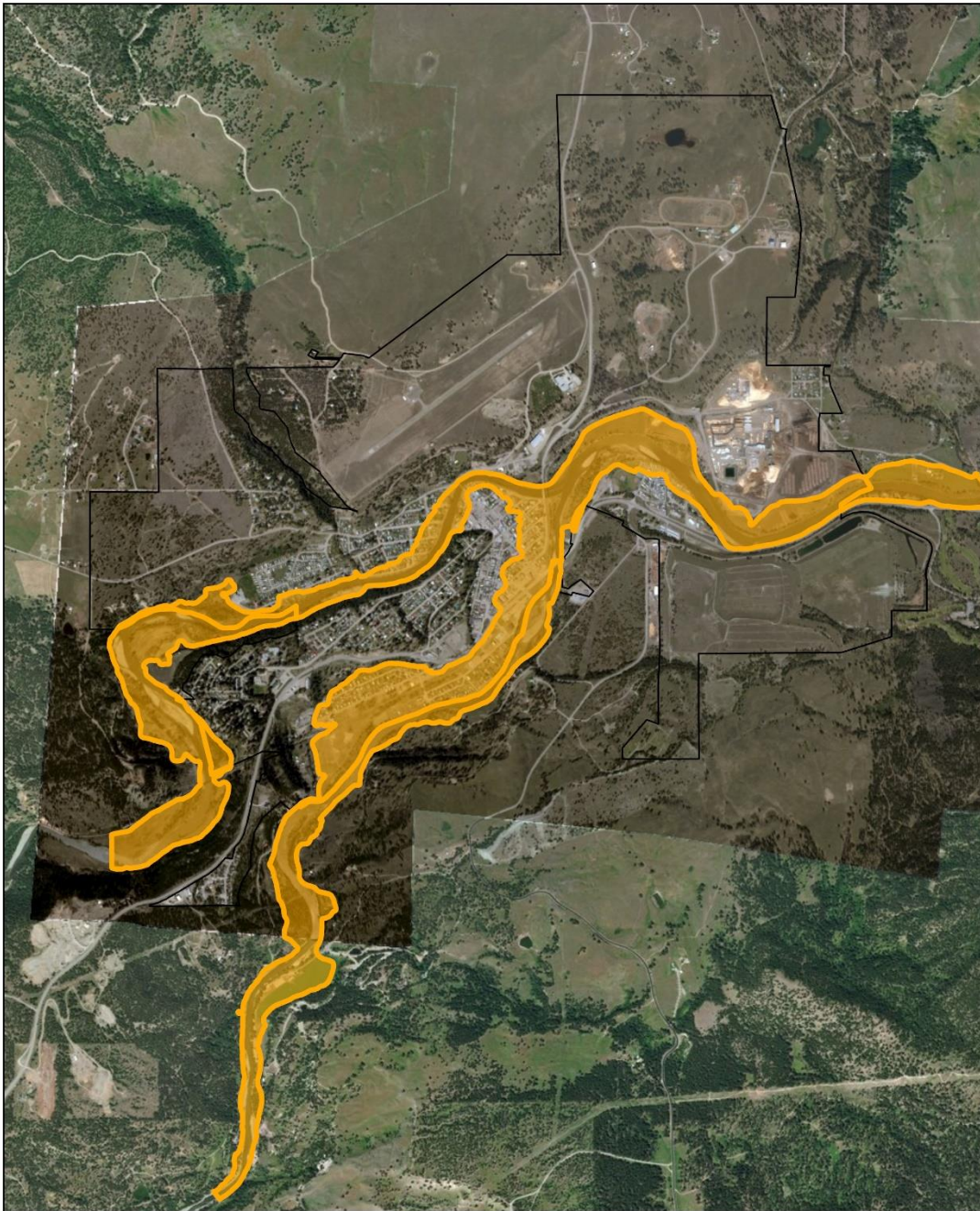
201 ALLISON AVE	203 ALLISON AVE	207 ALLISON AVE
252 ALLISON AVE	211 ALLISON AVE	222 ALLISON AVE
210 ALLISON AVE	227 ALLISON AVE	230 ALLISON AVE
216 ALLISON AVE	235 ALLISON AVE	236 ALLISON AVE
226 ALLISON AVE	240 ALLISON AVE	246 ALLISON AVE
237 ALLISON AVE	221 ALLISON AVE	213 ALLISON AVE
231 ALLISON AVE	208 ANGELA AVE	227 ANGELA AVE
223 ANGELA AVE	201 ANGELA AVE	246 ANGELA AVE
201 ANGELA AVE	252 ANGELA AVE	115 ANGELA AVE
189 ANGELA AVE	60 ANGELA AVE	121 ANGELA AVE
115 ANGELA AVE	117 ANGELA AVE	131 ANGELA AVE
143 ANGELA AVE	144 ANGELA AVE	145 ANGELA AVE
148 ANGELA AVE	152 ANGELA AVE	211 ANGELA AVE
204 ANGELA AVE	207 ANGELA AVE	216 ANGELA AVE
212 ANGELA AVE	215 ANGELA AVE	162 ANGELA AVE
129 ANGELA AVE	199 ANGELA AVE	202 ANGELA AVE
226 ANGELA AVE	232 ANGELA AVE	69 ANGELA AVE
40 ASPEN ST	130 ANGELA AVE	20 ASPEN ST
24 ASPEN ST	32 ASPEN ST	36 ASPEN ST
485 AUBURN CRES	407 AUBURN CRES	502 AUBURN CRES
523 AUBURN CRES	439 AUBURN CRES	411 AUBURN CRES
558 AUBURN CRES	460 AUBURN CRES	427 AUBURN CRES
415 AUBURN CRES	479 AUBURN CRES	450 AUBURN CRES
430 AUBURN CRES	486 AUBURN CRES	466 AUBURN CRES
494 AUBURN CRES	495 AUBURN CRES	480 AUBURN CRES
568 AUBURN CRES	507 AUBURN CRES	510 AUBURN CRES
454 AUBURN CRES	516 AUBURN CRES	520 AUBURN CRES
474 AUBURN CRES	525 AUBURN CRES	541 AUBURN CRES
551 AUBURN CRES	554 AUBURN CRES	555 AUBURN CRES
574 AUBURN CRES	563 AUBURN CRES	564 AUBURN CRES
586 AUBURN CRES	569 AUBURN CRES	571 AUBURN CRES
506 AUBURN CRES	580 AUBURN CRES	584 AUBURN CRES
511 AUBURN CRES	594 AUBURN CRES	602 AUBURN CRES
455 AUBURN CRES	419 AUBURN CRES	490 AUBURN CRES
25 BAR ST	16 BAR ST	19 BAR ST
56 BILLITER AVE	28 BAR ST	20 BAR ST
78 BILLITER AVE	68 BILLITER AVE	34 BAR ST
30 BILLITER AVE	77 BILLITER AVE	88 BILLITER AVE
59 BILLITER AVE	88 BILLITER AVE	44 BILLITER AVE
44 BILLITER AVE	38 BILLITER AVE	34 BILLITER AVE
65 BILLITER AVE	53 BILLITER AVE	43 BILLITER AVE
117 BRIDGE ST	60 BILLITER AVE	54 BILLITER AVE
296 BRIDGE ST	69 BILLITER AVE	64 BILLITER AVE
148 BRIDGE ST	130 BRIDGE ST	105 BRIDGE ST

306	BRIDGE ST	142	BRIDGE ST	147	BRIDGE ST
141	BRIDGE ST	301	BRIDGE ST	282	BRIDGE ST
169	BRIDGE ST	159	BRIDGE ST	302	BRIDGE ST
114	BRIDGE ST	282	BRIDGE ST (4 UNIT)	133	BRIDGE ST
297	BRIDGE ST	161	BRIDGE ST	167	BRIDGE ST
312	BRIDGE ST	279	BRIDGE ST	156	BRIDGE ST
83	BRIDGE ST	87	BRIDGE ST	287	BRIDGE ST
61	BRIDGE ST	72C	BRIDGE ST	255	BRIDGE ST
280	BURTON AVE	223	BURTON AVE	72B	BRIDGE ST
252	BURTON AVE	250	BURTON AVE	228	BURTON AVE
234	BURTON AVE	253	BURTON AVE	238	BURTON AVE
297	BURTON AVE	266	BURTON AVE	245	BURTON AVE
348	BURTON AVE	304	BURTON AVE	250	BURTON AVE
367	BURTON AVE	318	BURTON AVE	258	BURTON AVE
374	BURTON AVE	352	BURTON AVE	296	BURTON AVE
382	BURTON AVE	363	BURTON AVE	312	BURTON AVE
415	BURTON AVE	368	BURTON AVE	330	BURTON AVE
244	BURTON AVE	387	BURTON AVE	360	BURTON AVE
245	BURTON AVE	411	BURTON AVE	365	BURTON AVE
393	BURTON AVE	237	BURTON AVE (6 UNIT)	369	BURTON AVE
399	BURTON AVE	294	BURTON AVE	379	BURTON AVE
315	BURTON AVE	328	BURTON AVE	390	BURTON AVE
263	BURTON AVE	375	BURTON AVE	396	BURTON AVE
292	BURTON AVE	394	BURTON AVE	414	BURTON AVE
325	BURTON AVE	244	BURTON AVE (8 UNIT)	272	BURTON AVE
361	BURTON AVE	283	BURTON AVE	288	BURTON AVE
465	CORINA AVE	483	CORINA AVE	324	BURTON AVE
453	CORINA AVE	459	CORINA AVE	457	CORINA AVE
450 B	CORINA AVE	444	CORINA AVE	485	CORINA AVE
441	CORINA AVE	440	CORINA AVE	459	CORINA AVE
497	CORINA AVE	471	CORINA AVE	448	CORINA AVE
469	CORINA AVE	464	CORINA AVE	442	CORINA AVE
461	CORINA AVE	453	CORINA AVE	487	CORINA AVE
451	CORINA AVE	439	CORINA AVE	467	CORINA AVE
495	CORINA AVE	436	CORINA AVE	443	CORINA AVE
452	CORINA AVE	454	CORINA AVE	493	CORINA AVE
458	CORINA AVE	460	CORINA AVE	438	CORINA AVE
470	CORINA AVE	472	CORINA AVE	456	CORINA AVE
475	CORINA AVE	476	CORINA AVE	464	CORINA AVE
478	CORINA AVE	479	CORINA AVE	468	CORINA AVE
481	CORINA AVE	482	CORINA AVE	474	CORINA AVE
488	CORINA AVE A	466	CORINA AVE B	477	CORINA AVE
466	CORINA AVE A	486	CORINA AVE B	480	CORINA AVE
484	CORINA AVE B	488	CORINA AVE B	499	CORINA AVE
493	CORINA AVE	495	CORINA AVE	484	CORINA AVE A

170	DOLLIE ST	166	DOLLIE ST	486	CORINA AVE A
163	DOLLIE ST	173	DOLLIE ST	168	DOLLIE ST
79	FENCHURCH AVE	67	FENCHURCH AVE	82	FENCHURCH AVE
75	FENCHURCH AVE	20	FENCHURCH AVE	11	FENCHURCH AVE
12	FENCHURCH AVE	27	FENCHURCH AVE	23	FENCHURCH AVE
24	FENCHURCH AVE	33	FENCHURCH AVE	28	FENCHURCH AVE
44	FENCHURCH AVE	39	FENCHURCH AVE	34	FENCHURCH AVE
55	FENCHURCH AVE	45	FENCHURCH AVE	42	FENCHURCH AVE
58	FENCHURCH AVE	56	FENCHURCH AVE	52	FENCHURCH AVE
72	FENCHURCH AVE	62	FENCHURCH AVE	57	FENCHURCH AVE
32	FENCHURCH AVE	147	HALLIFORD AVE	63	FENCHURCH AVE
38	FENCHURCH AVE	158	HALLIFORD AVE	155	HALLIFORD AVE
161	HALLIFORD AVE	37	HALLIFORD AVE	76	HALLIFORD AVE
136	HALLIFORD AVE	57	HALLIFORD AVE	51	HALLIFORD AVE
138	HALLIFORD AVE	62	HALLIFORD AVE	58	HALLIFORD AVE
128	HALLIFORD AVE	69	HALLIFORD AVE	65	HALLIFORD AVE
122	HALLIFORD AVE	73	HALLIFORD AVE	71	HALLIFORD AVE
54	HALLIFORD AVE	82	HALLIFORD AVE	75	HALLIFORD AVE
72	HALLIFORD AVE	89	HALLIFORD AVE	86	HALLIFORD AVE
81	HALLIFORD AVE	123	HALLIFORD AVE	90	HALLIFORD AVE
150	HALLIFORD AVE	132	HALLIFORD AVE	121	HALLIFORD AVE
66	HALLIFORD AVE	142	HALLIFORD AVE	126	HALLIFORD AVE
87	HALLIFORD AVE	154	HALLIFORD AVE	135	HALLIFORD AVE
119	HALLIFORD AVE	120	HALLIFORD AVE)	146	HALLIFORD AVE
61	HALLIFORD AVE	72 A	HAROLD AVE	160	HALLIFORD AVE
81	HAROLD AVE	258	HAROLD AVE	259	HAROLD AVE
55	HAROLD AVE	199	HAROLD AVE	47	HAROLD AVE
245	HIGHWAY 3	221	HIGHWAY 3 B	311	HIGHWAY 3
311	HIGHWAY 3	263	HIGHWAY 3 (MOBILE HOME PARK 73)	199	HIGHWAY 3
221	HIGHWAY 3 A	398	HIGHWAY 3	235	HIGHWAY 3
202	HIGHWAY 5A A	202	HIGHWAY 5A B	430	HIGHWAY 3
38	KENLEY AVE	212 B	JOHNSON ST	23	KENLEY AVE
45	KENLEY AVE	89	KENLEY	37	KENLEY AVE
62	KENLEY AVE	31	KENLEY AVE	39	KENLEY AVE
75	KENLEY AVE	38	KENLEY AVE	44	KENLEY AVE
80	KENLEY AVE	51	KENLEY AVE	55	KENLEY AVE
27	KENLEY AVE	59	KENLEY AVE	60	KENLEY AVE
56	KENLEY AVE	63	KENLEY AVE	66	KENLEY AVE
67	KENLEY AVE	70	KENLEY AVE	73	KENLEY AVE
41	KENLEY AVE	81	KENLEY AVE	79	KENLEY AVE
252	LACHINE AVE	76	KENLEY AVE 2	82	KENLEY AVE
292	LACHINE AVE	42	KENLEY AVE	237	LACHINE AVE
235	LACHINE AVE	227	LACHINE AVE	249	LACHINE AVE
241	LACHINE AVE	236	LACHINE AVE	280	LACHINE AVE
284	LACHINE AVE	272	LACHINE AVE	290	LACHINE AVE

221	LACHINE AVE	286	LACHINE AVE	298	LACHINE AVE
262	LACHINE AVENUE	296	LACHINE AVE	231	LACHINE AVE
155	LIME ST	244	LACHINE AVE	240	LACHINE AVENUE
203	LUARD AVE	248	LIME ST	188	LUARD AVE
194	LUARD AVE	182	LUARD AVE	203	LUARD AVE
181	LUARD AVE	200	LUARD AVE	214	LUARD AVE
86	OLD HEDLEY RD	208	LUARD AVE	179	LUARD (APARTMENTS)
660	OLD MILL ROAD	203	OLD HEDLEY RD 1	681	OLD MILL (701/700/660)
303	PINE ST	700	OLD MILL ROAD	701	OLD MILL ROAD
316	PINE ST	306	PINE ST	320	PINE ST
317	POPLAR ST	309	POPLAR ST	310	PINE ST
317	RIVERSIDE AVE	320	POPLAR ST	262	POPLAR ST
263	RIVERSIDE AVE	271	RIVERSIDE AVE	680	RIVER RD
279	RIVERSIDE AVE	283	RIVERSIDE AVE	277	RIVERSIDE AVE
321	RIVERSIDE AVE	327	RIVERSIDE AVE	287	RIVERSIDE AVE
305	SANDERSON WAY	391	SIMILKAMEEN AVE	333	RIVERSIDE AVE
435	SIMILKAMEEN AVE	462	SIMILKAMEEN AVE	423	SIMILKAMEEN AVE
550	SIMILKAMEEN AVE	397	SIMILKAMEEN	439	SIMILKAMEEN AVE
500	SIMILKAMEEN AVE	431	SIMILKAMEEN AVE	467	SIMILKAMEEN AVE
492	SIMILKAMEEN AVE	451	SIMILKAMEEN AVE	475	SIMILKAMEEN AVE
479	SIMILKAMEEN AVE	472	SIMILKAMEEN AVE	489	SIMILKAMEEN AVE
429	SIMILKAMEEN AVE	483	SIMILKAMEEN AVE	495	SIMILKAMEEN AVE
445	SIMILKAMEEN AVE	494	SIMILKAMEEN AVE	499	SIMILKAMEEN AVE
511	SIMILKAMEEN AVE	498	SIMILKAMEEN AVE	507	SIMILKAMEEN AVE
527	SIMILKAMEEN AVE	502	SIMILKAMEEN AVE	517	SIMILKAMEEN AVE
571	SIMILKAMEEN AVE	515	SIMILKAMEEN AVE	539	SIMILKAMEEN AVE
583	SIMILKAMEEN AVE	537	SIMILKAMEEN AVE	563	SIMILKAMEEN AVE
593	SIMILKAMEEN AVE	553	SIMILKAMEEN AVE	589	SIMILKAMEEN AVE
611	SIMILKAMEEN AVE	577	SIMILKAMEEN AVE	601	SIMILKAMEEN AVE
471	SIMILKAMEEN AVE	587	SIMILKAMEEN AVE	614	SIMILKAMEEN AVE
496	SIMILKAMEEN AVE	600	SIMILKAMEEN AVE	631	SIMILKAMEEN AVE
455	SIMILKAMEEN AVE	613	SIMILKAMEEN AVE	452	SIMILKAMEEN AVE
617	SIMILKAMEEN AVE	621	SIMILKAMEEN AVE	581	SIMILKAMEEN AVE
400	STOUT ST	421	STOUT ST	125	TAPTON AVE
160	TAPTON AVE	77	TAPTON AVE	88	TAPTON AVE
131	TAPTON AVE	87	TAPTON AVE	149	TAPTON AVE
143	TAPTON AVE	147	TAPTON AVE	158	TAPTON AVE
153	TAPTON AVE	162	TAPTON AVE	75	TAPTON AVE
76	TAPTON AVE	136	TAPTON AVE	80	TAPTON AVE
84	TAPTON AVE	155	TAPTON AVE	137	TAPTON AVE (2 UNIT)
114	TAPTON AVE	117	TAPTON AVE	298	THOMAS
310	THOMAS ST	310	THOMAS ST	307	THOMAS ST
292	THOMAS ST	314	THOMAS ST	154	VERMILION AVE
304	THOMAS ST	206	VERMILION AVE	216	VERMILION AVE
162	VERMILION AVE	232	VERMILION AVE	19	WATERFRONT AVE

226	VERMILION AVE	295	WATERFRONT AVE	303	WATERFRONT AVE
311	WATERFRONT AVE	319	WATERFRONT AVE	327	WATERFRONT AVE
369	WATERFRONT AVE	359	WATERFRONT AVE	363	WATERFRONT AVE
383	WATERFRONT AVE	373	WATERFRONT AVE	379	WATERFRONT AVE
293	WATERFRONT AVE	440	WATERFRONT AVE	460	WATERFRONT AVE
335	WATERFRONT AVE				



Evacuation Alert - Similkameen Flood Plain - Princeton
Start Time - May 13 2018 16:00
Regional District Okanagan Similkameen

- Evacuations
- Evac Alert
 - Evac Order
 - Evac Rescinded

