



# FREE\* Yard and Agricultural Organic Waste Drop-off Program

For residents serviced by the following landfills:

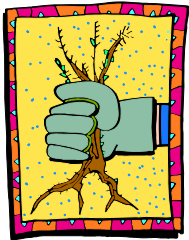
- Campbell Mountain
- Keremeos Transfer Facility
- Okanagan Falls
- Oliver

## WHY take YARD WASTE to the landfill?

- \* Reduce backyard burning
- \* Improve air quality
- \* Reduce wildfire hazards
- \* Landfill makes compost with yard waste!

## Did You Know?

In the Okanagan and Similkameen valleys we have fair or poor air quality up to two months of each year.



**Noxious Weeds**, a specific category of weed, may be accepted at landfills at no charge, but must be deposited with the garbage, **not** placed in the compost pile!



### ✓ YES, we accept:

- Grass and hedge clippings
- Pine needles and cones
- Windfall fruit
- Leaves
- Garden plants
- Prunings and branches up to 2.4 metres (8 feet) in length
- Agricultural stumps

### ✓ WE also accept Wood Waste:

- Kiln-dried dimensional lumber (such as wood pallets and clean demolition wood )
- Plywood
- Particle board and pressed board

### ✗ NO, we do not accept free:

- Food waste of any kind
- Dirt
- Non-agricultural stumps
- Any non-organic material

**NOTE:** WOOD WASTE must be free of rocks, metals (other than nails and screws), wire, creosote, heavy coats of paint, fibreglass, and asphalt roofing material, otherwise it will be charged at regular refuse rates of \$55.00 per Tonne, with a \$5 minimum charge.

\*Under 500kg—Free

200-580 kg—\$2

Over 580 kg—\$25/Tonne

Campbell Mountain Sanitary Landfill: 492-2907  
Oliver Sanitary Landfill: 498-3316  
Regional District Okanagan-Similkameen: 492-0237  
RDOS Website: [www.rdos.bc.ca](http://www.rdos.bc.ca)